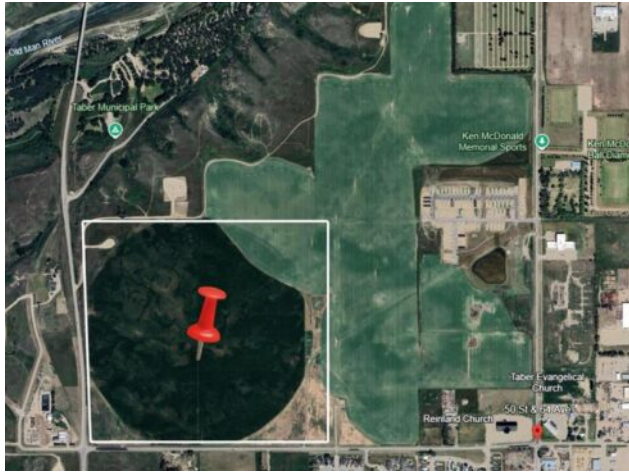




**4500 (Parcel 1) 64 Avenue N  
Taber, Alberta**

**MLS # A2215432**

**\$4,990,000**



<b>Division:</b>	NONE	
<b>Cur. Use:</b>	-	
<b>Style:</b>	-	
<b>Size:</b>	0 sq.ft.	<b>Age:</b> -
<b>Beds:</b>	-	<b>Baths:</b> -
<b>Garage:</b>	-	
<b>Lot Size:</b>	-	
<b>Lot Feat:</b>	-	

<b>Heating:</b>	-	<b>Water:</b>	-
<b>Floors:</b>	-	<b>Sewer:</b>	-
<b>Roof:</b>	-	<b>Near Town:</b>	Taber
<b>Basement:</b>	-	<b>LLD:</b>	7-10-16-W4
<b>Exterior:</b>	-	<b>Zoning:</b>	UR
<b>Foundation:</b>	-	<b>Utilities:</b>	-
<b>Features:</b>	-		

**Major Use:** Grain

160 acres of prime farm land located in the town of Taber. This land contains 140 irrigable acres, and is currently being leased and cultivated. It is zoned UR and annexed to the town of Taber for future residential development. Can be purchased separately, or in conjunction with surrounding parcels