

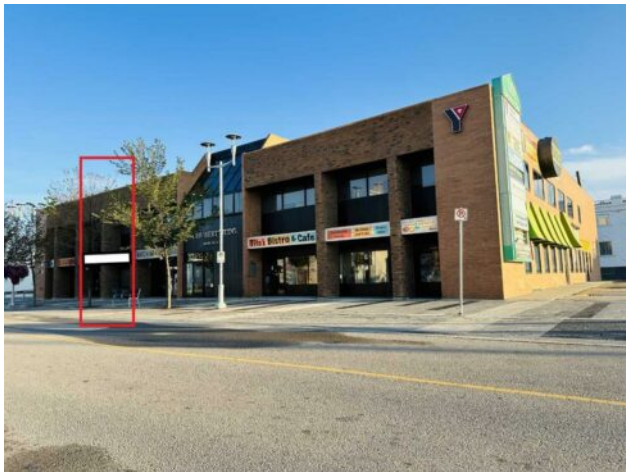


**GRASSROOTS**  
REALTY GROUP

1-833-477-6687  
aloha@grassrootsrealty.ca

103 A, 10002 101 Avenue  
Grande Prairie, Alberta

MLS # A2216639



**\$16 per sq.ft.**

Division: Central Business District

Type: Retail

Bus. Type: -

Sale/Lease: For Lease

Bldg. Name: -

Bus. Name: -

Size: 1,170 sq.ft.

Zoning: CC

Heating: -

Floors: -

Roof: -

Exterior: -

Water: -

Sewer: -

Inclusions: N/A

Addl. Cost: -

Based on Year: -

Utilities: -

Parking: -

Lot Size: -

Lot Feat: -

Affordable retail space in a central location, close to downtown. Includes all utilities, assigned parking and high speed fibre internet available in building . Base rent is \$1560.00 per month plus additional rent of \$812.18 for a total of \$2372.18 plus GST.