

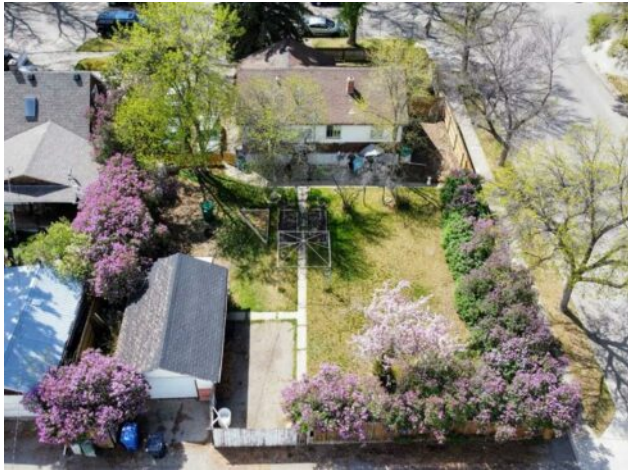


GRASSROOTS
REALTY GROUP

1-833-477-6687
aloha@grassrootsrealty.ca

645 12C Street N
Lethbridge, Alberta

MLS # A2219334



\$289,900

Division:	Senator Buchanan		
Type:	Residential/House		
Style:	Bungalow		
Size:	965 sq.ft.	Age:	1948 (77 yrs old)
Beds:	4	Baths:	2
Garage:	Single Garage Detached		
Lot Size:	0.22 Acre		
Lot Feat:	Back Yard, Landscaped, Standard Shaped Lot		

Heating:	Forced Air
Floors:	Hardwood, Linoleum, Vinyl Plank
Roof:	Asphalt Shingle
Basement:	Full, Suite
Exterior:	Wood Siding
Foundation:	Poured Concrete
Features:	Storage

Water:	-
Sewer:	-
Condo Fee:	-
LLD:	-
Zoning:	R-L
Utilities:	-

Inclusions: Fridge, Stove, Dishwasher, Microwave Hood Fan, Washer/Dryer, fridge in basement as is , STOVE, SMALL FRIDGE

This home is situated on an extra large lot, on a corner, with a detached garage. There are 2 bedrooms and a bathroom upstairs, and 2 bedrooms down (the living room is being used as a bedroom) with an additional kitchen. There is plenty of parking on the driveway, and a single detached garage out back.