

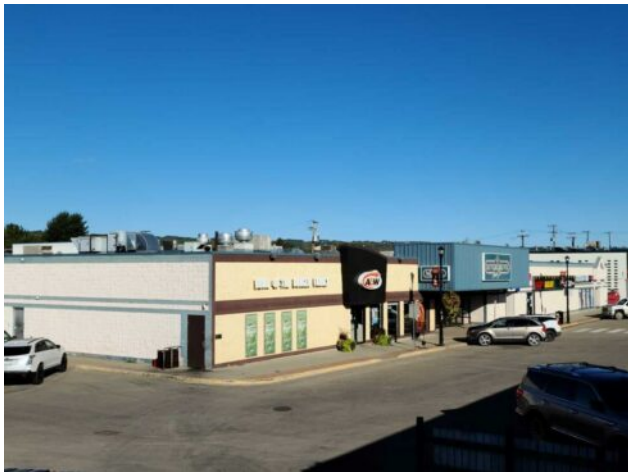


GRASSROOTS
REALTY GROUP

1-833-477-6687
aloha@grassrootsrealty.ca

10122 100 Street
Peace River, Alberta

MLS # A2220188



\$12 per sq.ft.

Division: Downtown

Type: Retail

Bus. Type: -

Sale/Lease: For Lease

Bldg. Name: -

Bus. Name: -

Size: 1,430 sq.ft.

Zoning: -

Heating: -

Addl. Cost: -

Floors: -

Based on Year: -

Roof: -

Utilities: -

Exterior: -

Parking: -

Water: -

Lot Size: -

Sewer: -

Lot Feat: -

Inclusions: N/A

Take advantage of the location and set up your new venture or grow the one you already have. Riverdrive Mall in the heart of downtown Peace River is a great place to see business expand. There are multiple spaces available and plenty of parking is available so come check out the options that exist.