

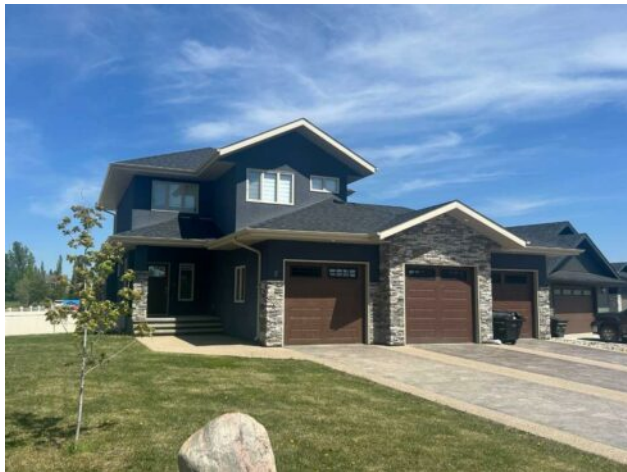


GRASSROOTS
REALTY GROUP

1-833-477-6687
aloha@grassrootsrealty.ca

2 Meadow Close Lacombe, Alberta

MLS # A2222419



\$675,000

Division:	Shepherd Heights		
Type:	Residential/House		
Style:	2 Storey		
Size:	1,930 sq.ft.	Age:	2018 (7 yrs old)
Beds:	5	Baths:	3 full / 1 half
Garage:	Triple Garage Attached		
Lot Size:	0.20 Acre		
Lot Feat:	Back Yard, City Lot, Corner Lot, Front Yard		

Heating:	In Floor, Forced Air, Natural Gas	Water:	-
Floors:	Carpet, Tile, Vinyl	Sewer:	-
Roof:	Asphalt Shingle	Condo Fee:	-
Basement:	Finished, Full	LLD:	-
Exterior:	Stone, Stucco, Wood Frame	Zoning:	R1
Foundation:	Poured Concrete	Utilities:	-

Features: Ceiling Fan(s), Central Vacuum, Closet Organizers, Double Vanity, High Ceilings, Kitchen Island, No Animal Home, No Smoking Home, Open Floorplan, Pantry, Quartz Counters, Vinyl Windows, Walk-In Closet(s)

Inclusions: NA

This amazing family home in Lacombe sits on a close with wonderful neighbours and includes a triple car garage! Large foyer greets you as you enter this bright home, main floor has a large kitchen, dining, living room with a gas fireplace and 1/2 bath, this space has high ceilings and plenty of windows along with a door to your partially covered deck and large back yard. Upstairs you will find a bonus/family room, laundry room, 3 bedrooms, nice size master with two walk in closets and a wonderful ensuite! Down are two great sized bedrooms and a very large 4 pce bath, both large bedrooms have the electrical requirements to set tvs up to easily convert one bedroom to a third family room. This home has a heated triple garage 3 floor drains, underfloor heat down, quartz counter tops, high end appliances, stamped concrete driveway with exposed borders, stamped concrete circular pad in back for your fire pit, 220 wired for a hot tub and so much more!