

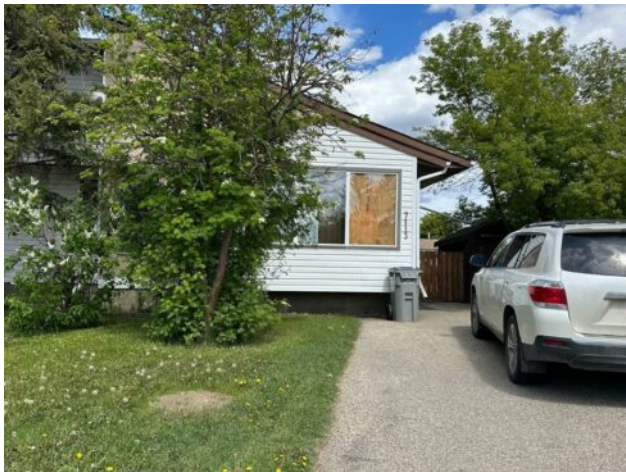


**GRASSROOTS**  
REALTY GROUP

1-833-477-6687  
aloha@grassrootsrealty.ca

**7113 99A Street  
Grande Prairie, Alberta**

**MLS # A2224021**



**\$235,000**

<b>Division:</b>	South Patterson Place		
<b>Type:</b>	Residential/Duplex		
<b>Style:</b>	Attached-Side by Side, Bi-Level		
<b>Size:</b>	954 sq.ft.	<b>Age:</b>	1979 (46 yrs old)
<b>Beds:</b>	3	<b>Baths:</b>	1
<b>Garage:</b>	Parking Pad		
<b>Lot Size:</b>	0.11 Acre		
<b>Lot Feat:</b>	Back Yard, Cul-De-Sac, Irregular Lot, Pie Shaped Lot		

<b>Heating:</b>	Forced Air, Natural Gas	<b>Water:</b>	-
<b>Floors:</b>	Carpet, Linoleum	<b>Sewer:</b>	-
<b>Roof:</b>	Asphalt Shingle	<b>Condo Fee:</b>	-
<b>Basement:</b>	Full, Partially Finished	<b>LLD:</b>	-
<b>Exterior:</b>	Mixed	<b>Zoning:</b>	RG
<b>Foundation:</b>	Poured Concrete	<b>Utilities:</b>	-
<b>Features:</b>	Laminate Counters, See Remarks		

**Inclusions:** Kitchen appliances, washer and dryer

**INVESTOR ALERT!** Both sides of this duplex are available to purchase. Come and view this lovely semi-detached home which features 3 bedrooms and a full bathroom. The main floor also has a spacious living room, kitchen, and dining area. The basement is open for future development. There is a huge pie-shaped backyard that is fully landscaped and fenced. Shingles replaced in 2017. This well maintained home is located in a quiet cul-de-sac within the subdivision of South Patterson, walking distance from schools, playgrounds, shopping, buses, and more. Sorry- no interior photos for privacy of the tenants. Quick possession is possible.