



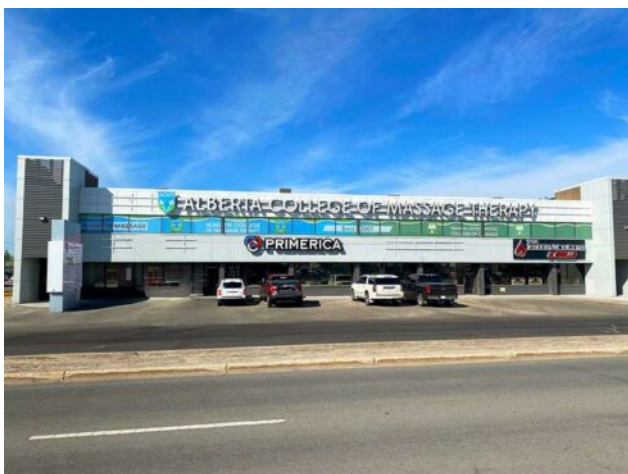
GRASSROOTS
REALTY GROUP

1-833-477-6687

aloha@grassrootsrealty.ca

205, 11402 100 Street
Grande Prairie, Alberta

MLS # A2225967



\$14 per sq.ft.

Division: VLA Montrose

Type: Office

Bus. Type: -

Sale/Lease: For Lease

Bldg. Name: -

Bus. Name: -

Size: 315 sq.ft.

Zoning: -

Heating: -

Addl. Cost: -

Floors: -

Based on Year: -

Roof: -

Utilities: -

Exterior: -

Parking: -

Water: -

Lot Size: -

Sewer: -

Lot Feat: -

Inclusions: N/A

Discover an ideal office space for lease, perfectly suited for professionals seeking a private and quiet work environment. This 315 sq. ft. upstairs office space offers excellent exposure while maintaining a high level of privacy. The base rent of this unit is priced to be \$14.00 per square foot with an additional cost of \$7.16 making the total monthly rent come to an affordable \$555.45. Ready for immediate possession, this space is perfect for solo entrepreneurs or small business owners looking to move in without delay. Don't miss out—Book a viewing today!