



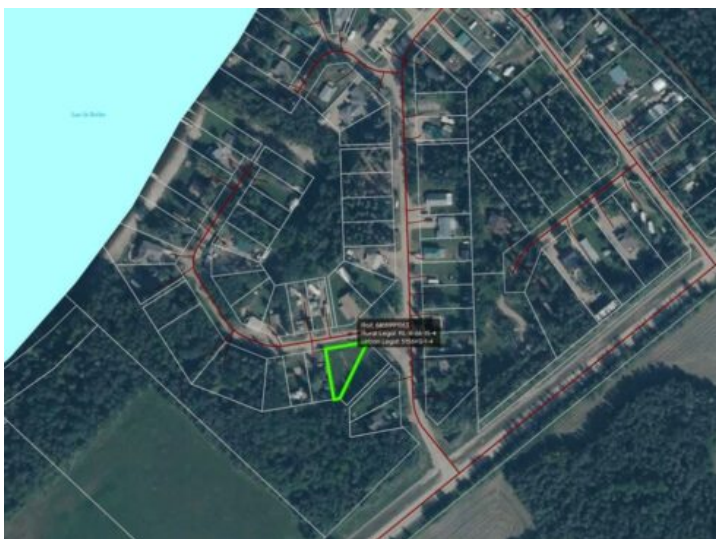
GRASSROOTS
REALTY GROUP

1-833-477-6687

aloha@grassrootsrealty.ca

**15538 Old Trail
Lac La Biche, Alberta**

MLS # A2229342



\$49,000

Division: NONE

Lot Size: 0.13 Acre

Lot Feat: -

By Town: -

LLD: -

Zoning: CR

Water: -

Sewer: -

Utilities: Electricity, Natural Gas, Phone, Sewer, Water

Weekend-Ready at Bayview Beach – Your Lakeside Escape Awaits. Tucked into the peaceful Bayview Beach subdivision on beautiful Lac La Biche Lake, this charming recreational lot is your chance to unwind, recharge, and soak up lake life—all just steps from the water. Set among mature trees, this private, well-treed lot offers the perfect blend of shade and seclusion. Whether you want to park your RV for weekend getaways or start planning your dream cabin, this spot gives you the flexibility to do both. Enjoy easy access to the lake via the nearby municipal reserve, where you’ll find a sandy beach and a public boat launch just a short stroll away—perfect for fishing, watersports, or quiet morning paddles. Bayview Beach is a welcoming mix of seasonal and year-round residents, and with municipal water and sewer now available in the subdivision, future development is easier than ever. Just two minutes from the hamlet of Plamondon, you’re never far from groceries, fuel, and local amenities—convenience and tranquility all in one. Whether you’re looking for a peaceful retreat or a future full-time home base near the lake, this hidden gem offers a rare chance to get close to the water without the premium price of true lakefront. Start making memories at Bayview Beach—where lake days are just around the corner!