



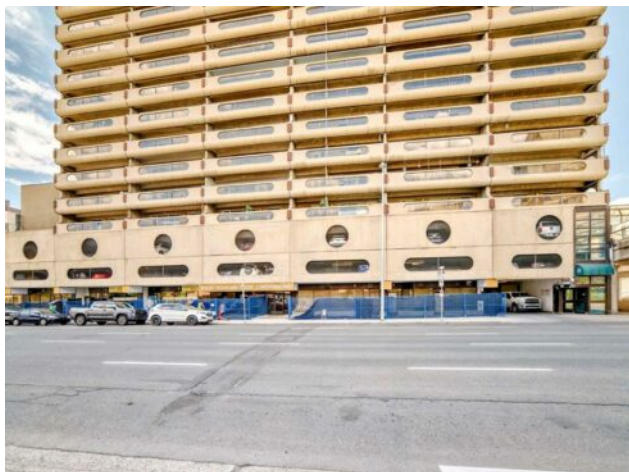
GRASSROOTS
REALTY GROUP

1-833-477-6687

aloha@grassrootsrealty.ca

2103, 221 6 Avenue SE
Calgary, Alberta

MLS # A2240583



\$179,990

Division:	Downtown Commercial Core		
Type:	Residential/High Rise (5+ stories)		
Style:	Apartment-Single Level Unit		
Size:	708 sq.ft.	Age:	1980 (45 yrs old)
Beds:	1	Baths:	1
Garage:	Assigned, Garage Door Opener, Parkade		
Lot Size:	-		
Lot Feat:	-		

Heating:	Baseboard, Hot Water, Natural Gas	Water:	-
Floors:	Carpet, Vinyl	Sewer:	-
Roof:	Tar/Gravel	Condo Fee:	\$ 579
Basement:	-	LLD:	-
Exterior:	Concrete	Zoning:	CR20-C20
Foundation:	Poured Concrete	Utilities:	-
Features:	No Smoking Home		

Inclusions: None

Spacious Downtown Condo with Stunning Views! This spacious south-facing unit at Rocky Mountain Court. Offering over 700 sq.ft. on the 21st floor. This condo is perfectly situated in the heart of downtown Calgary, closes to everything- the C-Train, Central Library, Olympic Plaza, City Hall, and a variety of shops and restaurants. The functional floor plan includes a generous living room and bedroom. The big storage room can be easily transformed into a home office or den. The huge balcony is perfect for relaxing or watch the city views. Residents enjoy access to fantastic building amenities, including a sauna, fitness center and racquetball courts.