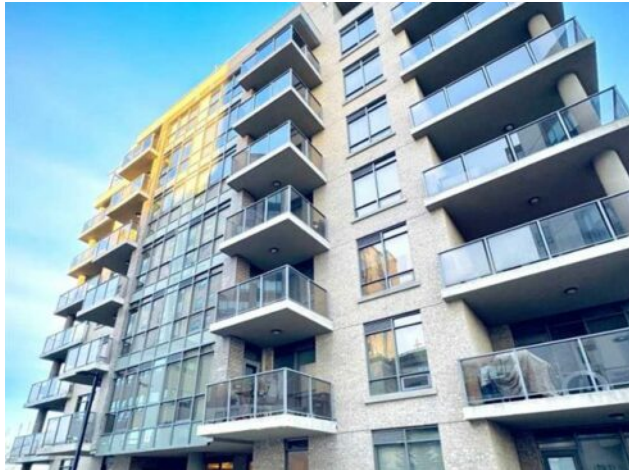




**308, 10 Shawnee Hill SW**  
**Calgary, Alberta**

**MLS # A2241532**



**\$285,000**

<b>Division:</b>	Shawnee Slopes		
<b>Type:</b>	Residential/High Rise (5+ stories)		
<b>Style:</b>	Apartment-Single Level Unit		
<b>Size:</b>	613 sq.ft.	<b>Age:</b>	2009 (16 yrs old)
<b>Beds:</b>	1	<b>Baths:</b>	1
<b>Garage:</b>	Underground		
<b>Lot Size:</b>	-		
<b>Lot Feat:</b>	-		

<b>Heating:</b>	Central	<b>Water:</b>	-
<b>Floors:</b>	Carpet, Ceramic Tile, Hardwood	<b>Sewer:</b>	-
<b>Roof:</b>	-	<b>Condo Fee:</b>	\$ 556
<b>Basement:</b>	-	<b>LLD:</b>	-
<b>Exterior:</b>	Brick, Concrete	<b>Zoning:</b>	DC (pre 1P2007)
<b>Foundation:</b>	-	<b>Utilities:</b>	-
<b>Features:</b>	Breakfast Bar, Chandelier, No Animal Home, No Smoking Home, Open Floorplan, Quartz Counters, Recessed Lighting, Storage, Tray Ceiling(s)		
<b>Inclusions:</b>	N/A		

Investor Alert - low entry price, high rental demand, and strong long-term upside! Welcome to Highbury Tower where modern comfort meets upscale design and unbeatable convenience. With concrete construction, this building offers superior sound insulation, enhanced fire safety, and lasting durability for a quieter, more secure living experience. This bright and thoughtfully designed 1-bedroom + den condo offers 9-foot ceilings, floor-to-ceiling windows, and a quiet west-facing exposure with views toward Fish Creek Park. The chef-inspired kitchen features flat-panel soft-close cabinetry, under-cabinet lighting, quartz countertops, and a large island with chic pendant lighting. The premium Fisher & Paykel appliance package includes a 5-burner gas range, chimney-style hood fan, new Bosch dishwasher, and full-size refrigerator. A walk-through closet leads from the spacious bedroom to a stylish 4-piece ensuite with a deep soaker tub. The flexible den is perfect for a home office or creative space. Enjoy in-suite laundry, central A/C, and a covered NW-facing balcony with a gas line for summer BBQs and the occasional deer sighting. Building amenities include a fitness center, party lounge, secure FOB access, heated underground parking, storage locker, visitor parking, and bike storage. Located steps from Fish Creek&ndash;Lacombe LRT, close to Fish Creek Park, St. Mary&rsquo;s University, shopping, dining, and major routes. Whether you're a first-time buyer, downsizer, or investor, this home offers a rare blend of style, function, and location in one of Calgary&rsquo;s most desirable communities.