



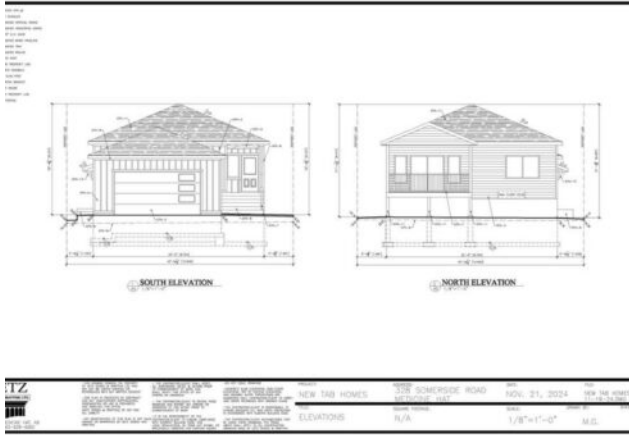
**GRASSROOTS**  
REALTY GROUP

1-833-477-6687  
aloha@grassrootsrealty.ca

**328 Somerside Road SE  
Medicine Hat, Alberta**

**MLS # A2248278**

**\$585,000**



<b>Division:</b>	Southland		
<b>Type:</b>	Residential/House		
<b>Style:</b>	Bungalow		
<b>Size:</b>	1,137 sq.ft.	<b>Age:</b>	2025 (0 yrs old)
<b>Beds:</b>	4	<b>Baths:</b>	3
<b>Garage:</b>	Double Garage Attached		
<b>Lot Size:</b>	0.10 Acre		
<b>Lot Feat:</b>	Back Lane, Back Yard, City Lot, Front Yard		

<b>Heating:</b>	Electric, Forced Air, Natural Gas	<b>Water:</b>	-
<b>Floors:</b>	Vinyl Plank	<b>Sewer:</b>	-
<b>Roof:</b>	Asphalt Shingle	<b>Condo Fee:</b>	-
<b>Basement:</b>	Separate/Exterior Entry, Finished, Full	<b>LLD:</b>	-
<b>Exterior:</b>	Concrete, Vinyl Siding, Wood Frame	<b>Zoning:</b>	RL
<b>Foundation:</b>	Poured Concrete	<b>Utilities:</b>	-
<b>Features:</b>	Ceiling Fan(s), Pantry, Quartz Counters		

**Inclusions:** NONE

Are you looking for a brand-new home with a secondary Kitchen, a secondary Laundry room and a separate entrance? This is the one, 328 Somerside Road SE in Southlands of Medicine Hat. It's a stunning bungalow. You'll have 2 sets of kitchens, 2 sets of laundry rooms and 2 sets of hot water on demands. New TAB HOMES LTD and DP76 CONSTRUCTION build this dream home that combines comfort, convenience, fashion and affordable. It's a great buy and suitable to all buyers, especially who has few generations, working young families would like a passive income for the mortgage and investors. This luxury and smart home has quartz countertops for the kitchens and the washrooms, vinyl planks flooring, and an attached double size garage. Don't miss out this opportunity to own a home that doesn't come on the market often. RMS square footage is based on builder plans.