

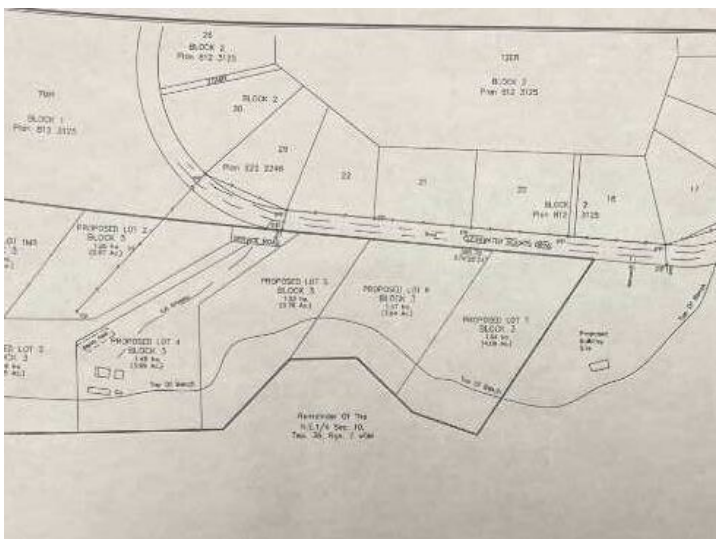


GRASSROOTS
REALTY GROUP

1-833-477-6687
aloha@grassrootsrealty.ca

Clearwater Heights Drive Rural Clearwater County, Alberta

MLS # A2257166



\$159,900

Division: Clearwater Heights

Lot Size: 3.45 Acres

Lot Feat: -

By Town: Caroline

LLD: 10-36-7-W5

Zoning: CR

Water: See Remarks

Sewer: -

Utilities: -

Newly subdivided parcel, ready for your personal touch! This property is close to Crown Land and a multitude of recreational pursuits, including fishing, kayaking, hiking and much more.