

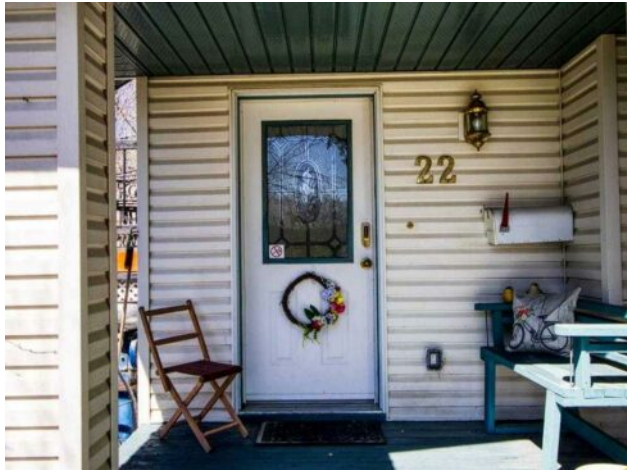


GRASSROOTS
REALTY GROUP

1-833-477-6687
aloha@grassrootsrealty.ca

**22 Greenview Crescent
Strathmore, Alberta**

MLS # A2257911



\$539,900

Division:	Green Meadow		
Type:	Residential/House		
Style:	Bi-Level		
Size:	1,103 sq.ft.	Age:	1995 (30 yrs old)
Beds:	4	Baths:	2
Garage:	Double Garage Detached		
Lot Size:	0.21 Acre		
Lot Feat:	Back Lane, Back Yard, Cul-De-Sac, Low Maintenance Landscape, Pie Shape		

Heating:	Forced Air	Water:	-
Floors:	Carpet, Tile, Vinyl	Sewer:	-
Roof:	Asphalt Shingle	Condo Fee:	-
Basement:	Separate/Exterior Entry, Finished, Full, Walk-Up To Grade	LLD:	-
Exterior:	Vinyl Siding, Wood Frame	Zoning:	R1
Foundation:	Poured Concrete	Utilities:	-
Features:	Bookcases, Built-in Features, Ceiling Fan(s), Kitchen Island, No Smoking Home, Suspended Ceiling		

Inclusions: N/A

Located in a quiet cul-de-sac in Strathmore's desirable Greenwood Meadows, this well-maintained home offers 4 bedrooms, 2 bathrooms, vaulted ceilings, and two fireplaces. The fully developed lower level includes a separate entrance, perfect for extended family, home based business or future suite potential. Enjoy the huge south/west-facing deck, perfect for outdoor entertaining, overlooking a large yard with garden space, RV parking, and room to build a second garage or workshop. The oversized, heated double detached garage adds even more functionality. Upgrades include new shingles (2024), air conditioning, and updated mechanicals. Situated close to schools, sports facilities, shopping, and dining in Strathmore. A rare find with space, privacy, and potential - don't miss out - call your AWESOME realtor today!