

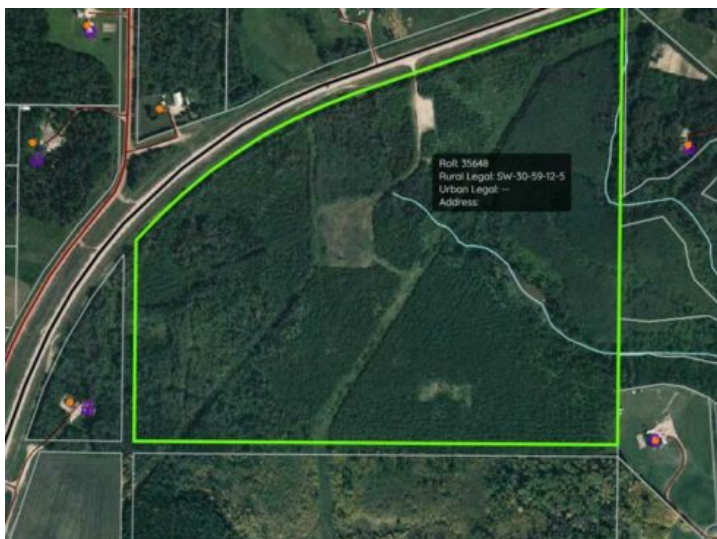


**GRASSROOTS**  
REALTY GROUP

1-833-477-6687  
aloha@grassrootsrealty.ca

**SW 30-59-12 W5**  
**Rural Woodlands County, Alberta**

**MLS # A2261417**



**\$399,900**

**Division:** NONE

**Lot Size:** 114.90 Acres

**Lot Feat:** -

**By Town:** Whitecourt

**LLD:** 30-59-12-W5

**Zoning:** CR

**Water:** None

**Sewer:** None

**Utilities:** -

114.90 Acres of Private, Treed Land Near Whitecourt! Just minutes from Whitecourt! Tucked away off the pavement, this stunning property is mostly treed, offering seclusion and a serene natural setting. A small clearing provides the ideal spot to build your dream home or getaway retreat. Adding to its appeal, a creek runs onto the property, enhancing the beauty and tranquility of the land. Plus, you'll have the option to connect to town water in the future if desired. Whether you're looking for a recreational escape, a private homestead, or an investment in land, this property has endless possibilities!