



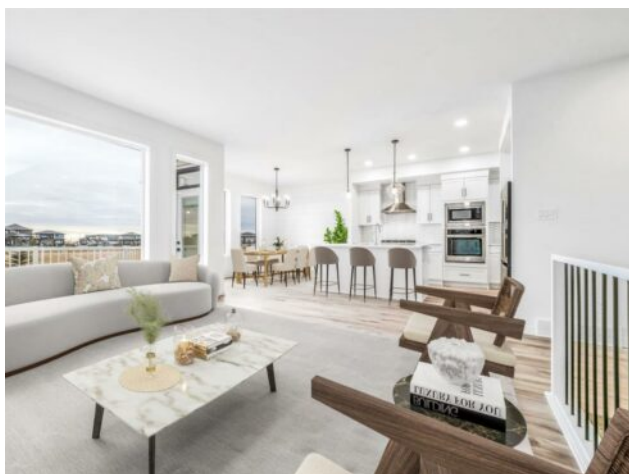
GRASSROOTS
REALTY GROUP

1-833-477-6687

aloha@grassrootsrealty.ca

**4421 31 Avenue S
Lethbridge, Alberta**

MLS # A2262511



\$689,900

Division:	Discovery		
Type:	Residential/House		
Style:	2 Storey		
Size:	2,032 sq.ft.	Age:	2025 (1 yrs old)
Beds:	3	Baths:	2 full / 1 half
Garage:	Double Garage Attached		
Lot Size:	0.09 Acre		
Lot Feat:	Backs on to Park/Green Space		

Heating:	Forced Air	Water:	-
Floors:	Carpet, Laminate, Tile	Sewer:	-
Roof:	Asphalt Shingle	Condo Fee:	-
Basement:	Full	LLD:	-
Exterior:	Concrete, Vinyl Siding, Wood Frame	Zoning:	RCL
Foundation:	Poured Concrete	Utilities:	-
Features:	Kitchen Island, Pantry, Walk-In Closet(s)		

Inclusions: None

Welcome to the "Aerin "model by Avonlea Homes. This particular home backs onto school grounds and loaded with extra features. Upon entry, hang up your coats in the beautiful mud room conveniently situated near the garage entrance. Unload your groceries effortlessly with immediate access from the mud room to the walk through pantry. the main floor includes a convenient 2-piece bathroom, and a central staircase. The open concept adds to the entertaining- friendly layout with easy access to the back deck. Enjoy the gas fireplace on these cold winter nights. Large windows throughout allow for natural sunlight to fill the home. The upper level features a spacious bonus room, 3 bedrooms, Master retreat with walk-in closet and 5 piece ensuite with separate tub and shower and dual sinks separated by a sliding barn door. There is also a bright laundry room with laundry sink. The unfinished basement and is set up for a future family room, bedroom and another full bath. Enjoy the LARGER GARAGE for parking and extra storage. Located in Southbrook backing onto school, playground and park. Also close to all the amenities the South side has to offer. NHW. Home is virtually staged.