

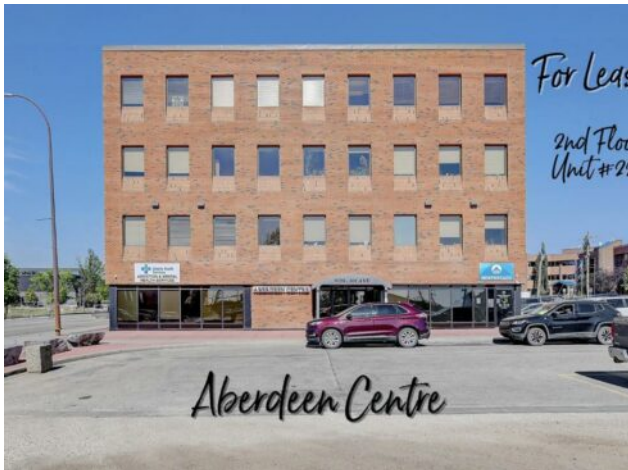


**GRASSROOTS**  
REALTY GROUP

1-833-477-6687  
aloha@grassrootsrealty.ca

222, 9728 101 Avenue  
Grande Prairie, Alberta

MLS # A2267582



**\$600 per month**

**Division:** Central Business District

**Type:** Office

**Bus. Type:** -

**Sale/Lease:** For Lease

**Bldg. Name:** Aberdeen Centre

**Bus. Name:** -

**Size:** 227 sq.ft.

**Zoning:** CC

**Heating:** Baseboard, Hot Water

**Floors:** -

**Roof:** -

**Exterior:** -

**Water:** -

**Sewer:** -

**Inclusions:** N/A

**Addl. Cost:** -

**Based on Year:** -

**Utilities:** -

**Parking:** -

**Lot Size:** 1.45 Acres

**Lot Feat:** Near Public Transit, Paved, Street Lighting

Immediate Possession Available &ndash; \$600/MONTH + GST (Utilities included) for a 227 sq ft professional office space in Aberdeen Centre, one of Grande Prairie's most recognized commercial buildings. Perfectly positioned along Resources Road, a major arterial route through the City, this location ensures excellent visibility, easy access, and exceptional convenience for both clients and staff. This suite is bright and functional with ITS OWN KITCHENETTE plus a shared 2nd-floor kitchenette conveniently located just up the hall, making it an ideal fit for a variety of professional, administrative, or service-based businesses. Tenants enjoy access to two professionally maintained washrooms on the same floor with the added benefit of shared access to a boardroom on the 4th floor (by appointment), perfect for presentations, team meetings, or collaborative sessions. The air-conditioned building is wheelchair accessible, equipped with elevator service, a main floor security booth, and offers paved parking directly adjacent for maximum convenience. The Aberdeen Centre offers a polished, professional setting designed to support productivity and create a welcoming experience for clients and staff alike. Its combination of visibility, accessibility, and amenities makes it an excellent choice for businesses seeking a premium commercial location. Known for its clean, professional environment and central location, Aberdeen Centre provides a strong foundation for growing or established businesses. Contact your Commercial REALTOR® today to arrange a private tour. **CLICK MULTIMEDIA FOR FULL 3D TOUR!** Note: Square footage measurements used for lease purposes have been calculated according to actual measurements using BOMA Standards. 3D Tour measurements are not based on standardized calculations

Copyright (c) 2026 . Listing data courtesy of Grassroots Realty Group Ltd.. Information is believed to be reliable but not guaranteed.