



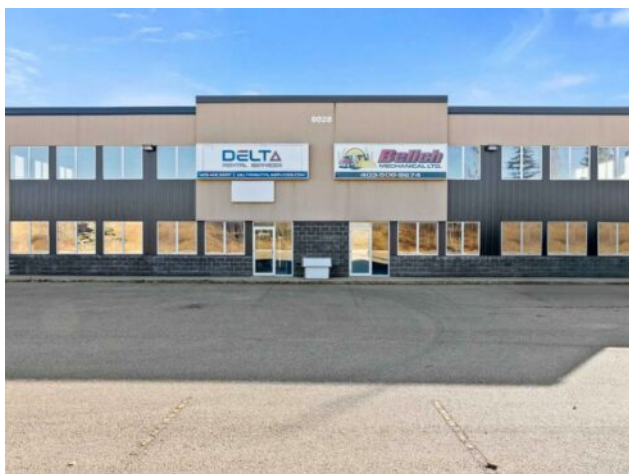
GRASSROOTS
REALTY GROUP

1-833-477-6687

aloha@grassrootsrealty.ca

**10 & 20, 8028 Edgar Industrial Crescent
Red Deer, Alberta**

MLS # A2267823



\$1,650,000

Division: Edgar Industrial Park

Type: Industrial

Bus. Type: -

Sale/Lease: For Sale

Bldg. Name: -

Bus. Name: -

Size: 10,718 sq.ft.

Zoning: I-1

Heating: -

Addl. Cost: -

Floors: -

Based on Year: -

Roof: -

Utilities: -

Exterior: -

Parking: -

Water: -

Lot Size: 1.28 Acres

Sewer: -

Lot Feat: -

Inclusions: N/A

Located in Edgar Industrial Park, this 10,718 SF building on 1.28 Acres is available for sale. The building is separated into two separate units but could be used as a one for a single user. Unit 10 is 5,359 SF and features an unfinished office/storage area and one washroom. The shop in this unit is 4,599 SF and includes (2) 14' x 16' overhead doors and a ±720 SF storage mezzanine. Unit 20 is also 5,359 SF and features a developed office space including a reception area, one office, a staff lunchroom, and two washrooms - one of which is accessible from the shop. The shop is 4,568 SF with (2) 14' x 16' overhead doors and another ±720 SF storage mezzanine. The yard is graveled and fully fenced and there is ample paved parking available on site. This is an excellent location with quick access to both Highway 2 (QEI) and Highway 11A. The property is also available for lease and while the sale is for the building as a whole, the units could potentially be leased separately.