

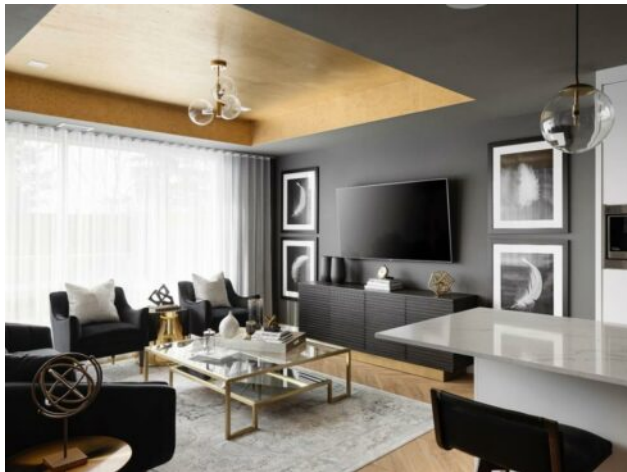


**GRASSROOTS**  
REALTY GROUP

1-833-477-6687  
aloha@grassrootsrealty.ca

**110, 8505 Broadcast Avenue SW  
Calgary, Alberta**

**MLS # A2271120**



**\$839,900**

<b>Division:</b>	West Springs		
<b>Type:</b>	Residential/High Rise (5+ stories)		
<b>Style:</b>	Apartment-Multi Level Unit		
<b>Size:</b>	1,868 sq.ft.	<b>Age:</b>	2020 (5 yrs old)
<b>Beds:</b>	3	<b>Baths:</b>	3
<b>Garage:</b>	Additional Parking, Parkade, Secured, Underground		
<b>Lot Size:</b>	-		
<b>Lot Feat:</b>	-		

<b>Heating:</b>	Fan Coil, Natural Gas
<b>Floors:</b>	Vinyl Plank
<b>Roof:</b>	Rubber
<b>Basement:</b>	-
<b>Exterior:</b>	Concrete
<b>Foundation:</b>	Poured Concrete
<b>Features:</b>	High Ceilings, See Remarks

<b>Water:</b>	-
<b>Sewer:</b>	-
<b>Condo Fee:</b>	\$ 1,177
<b>LLD:</b>	-
<b>Zoning:</b>	DC
<b>Utilities:</b>	-

**Inclusions:** n/a

Welcome to Gateway, located in the vibrant, master-planned community of West District. This stunning concrete-constructed, two-level brownstone offers an exceptional combination of modern elegance and everyday convenience. Featuring 3 bedrooms, 3 bathrooms, plus main floor den, upper floor bonus room and the added bonus of 2 titled underground parking stalls, this home is the epitome of sophisticated urban living. Step inside to experience unparalleled craftsmanship and luxurious details at every turn. Year-round comfort is ensured with air conditioning, while Chevron wide-plank luxury flooring adds a touch of refinement throughout. Each bathroom is a spa-like retreat, enhanced by custom penny round mosaic tiles. The painted ceilings further elevate the ambiance, giving every space a polished and refined feel. The chef-inspired kitchen is the heart of this home. With its super matte finishes and striking brushed gold hardware, the kitchen is both stylish and functional. High-end appliances, including a gas cooktop, wall oven, and a spacious 36" Fisher & Paykel integrated fridge, make meal prep a pleasure. The paneled dishwasher, soft-close custom cabinetry, under-cabinet lighting, and quartz countertops with a matching backsplash complete this elegant culinary space, perfect for both cooking and entertaining. Designed with both comfort and practicality in mind, the open-concept floor plan features floor-to-ceiling windows that flood the home with natural light. These expansive windows open to a private patio, creating seamless indoor-outdoor living. The primary suite offers its own private balcony—ideal for enjoying a quiet morning coffee or a peaceful evening sunset. Two additional bedrooms, full bathroom, and versatile workspace complete the upper level. Additional conveniences include an in-suite washer and dryer, making laundry a breeze.

Set in an exclusive community, Gateway offers the perfect blend of luxury, location, and lifestyle. Stay tuned for an upcoming photo gallery that will showcase the beauty and elegance of this exceptional residence.