

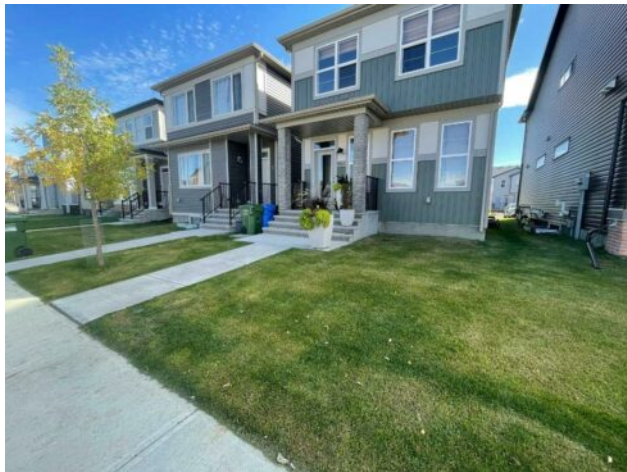


GRASSROOTS
REALTY GROUP

1-833-477-6687
aloha@grassrootsrealty.ca

551 Wolf Creek Way SE
Calgary, Alberta

MLS # A2275232



\$659,900

Division:	Wolf Willow		
Type:	Residential/House		
Style:	2 Storey		
Size:	1,476 sq.ft.	Age:	2023 (2 yrs old)
Beds:	3	Baths:	2 full / 1 half
Garage:	Double Garage Detached		
Lot Size:	0.06 Acre		
Lot Feat:	Back Lane, Back Yard, Level		

Heating:	Forced Air, Natural Gas	Water:	-
Floors:	Carpet, Ceramic Tile, Hardwood	Sewer:	-
Roof:	Asphalt Shingle	Condo Fee:	-
Basement:	Full	LLD:	-
Exterior:	Stone, Vinyl Siding, Wood Frame	Zoning:	R-G
Foundation:	Poured Concrete	Utilities:	-
Features:	Bar		

Inclusions: none

LOCATION, LOCATION, LOCATION. This upgraded home features an open floor concept with 9' high ceilings, three bedrooms, two and a half bathrooms, a rear mudroom, large kitchen with a spacious island and engineered hardwood flooring. Basement is professionally developed with BAR, additional bedroom, SPA level Bathroom, and additional family room. Enjoy your OVERSIZED DOUBLE DETACHED GARAGE WITH SHOP AREA, and plenty of yard space to bask in the summer sun or have a snowball fight in the winter. Wolf Willow is a fantastic neighborhood Bordering Fish Creek Park, the Blue Devil Golf Course and the Bow River, Wolf Willow is an exciting new SE community that brings the lifestyle and beauty of the Bow River Valley to your doorstep. Connected by walking paths, parks and a future dedicated dog park, this community provides endless recreational opportunities with the convenience of urban amenities just minutes away and easy access to Macleod Trail and Stoney Trail. You will truly enjoy this impeccable home!