

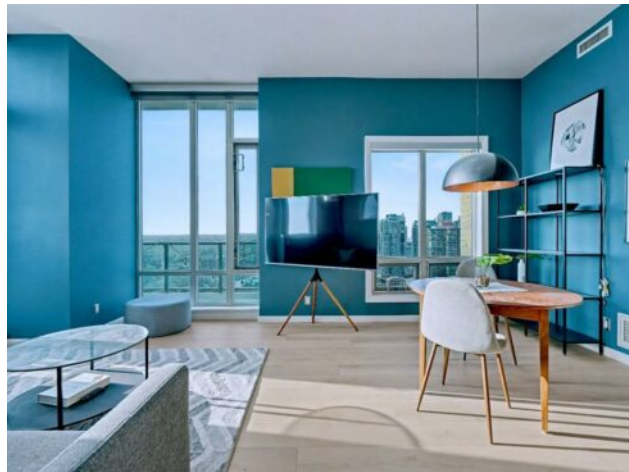


GRASSROOTS
REALTY GROUP

1-833-477-6687
aloha@grassrootsrealty.ca

**2210, 210 15 Avenue SE
Calgary, Alberta**

MLS # A2278812



\$375,000

Division:	Beltline		
Type:	Residential/High Rise (5+ stories)		
Style:	Apartment-Single Level Unit		
Size:	823 sq.ft.	Age:	2008 (18 yrs old)
Beds:	2	Baths:	2
Garage:	Underground		
Lot Size:	-		
Lot Feat:	-		

Heating:	Forced Air	Water:	-
Floors:	Carpet, Ceramic Tile, Laminate	Sewer:	-
Roof:	-	Condo Fee:	\$ 516
Basement:	-	LLD:	-
Exterior:	Brick, Concrete, Stone, Stucco	Zoning:	DC
Foundation:	-	Utilities:	-
Features:	Closet Organizers, Granite Counters, High Ceilings, No Smoking Home, Walk-In Closet(s)		

Inclusions: N/A

Upgraded 2 bedroom, 2 bathroom condo in the heart of Victoria Park, offering southwest corner 22nd-floor panoramic views of the Stampede Grounds, Elbow River, MOUNTAINS, and downtown. Bright, open-concept layout with 10' CEILINGS, FLOOR-TO-CEILING WINDOWS with natural light, updated paint and flooring, and a modern kitchen with granite counters, full-height cabinetry, white tile backsplash, and updated stainless steel appliances. Bedrooms on opposite sides include a primary with 4-piece ensuite, plus additional storage for convenience. In-unit laundry, STORAGE, heated secured UNDERGROUND TITLED PARKING with bike rack, and access to a fitness facility, sauna, hot tub, and social room. Steps to C-Train, shopping, restaurants, and the Scotiabank Saddledome.