

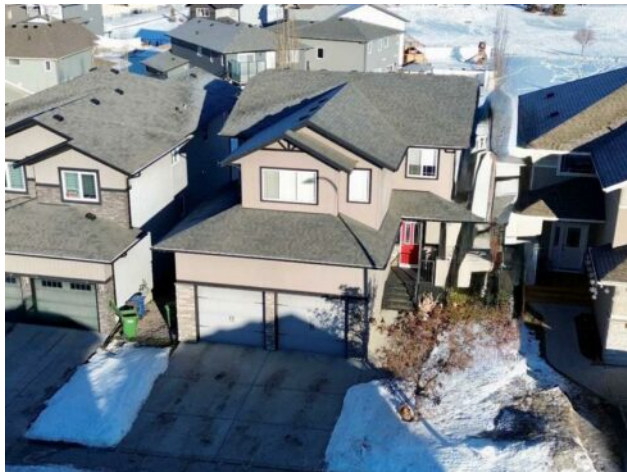


GRASSROOTS
REALTY GROUP

1-833-477-6687
aloha@grassrootsrealty.ca

**68 Thompson Crescent
Red Deer, Alberta**

MLS # A2279798



\$669,900

Division:	Timberstone		
Type:	Residential/House		
Style:	2 Storey		
Size:	2,129 sq.ft.	Age:	2013 (13 yrs old)
Beds:	4	Baths:	3 full / 1 half
Garage:	Double Garage Attached		
Lot Size:	0.12 Acre		
Lot Feat:	Back Lane, Back Yard, Backs on to Park/Green Space, Gentle Sloping, Private		

Heating: Boiler, In Floor, Forced Air, Natural Gas

Floors: Ceramic Tile, Laminate

Roof: Asphalt Shingle

Basement: Full

Exterior: Vinyl Siding

Foundation: Poured Concrete

Water: -

Sewer: -

Condo Fee: -

LLD: -

Zoning: R-L

Utilities: -

Features: Built-in Features, Ceiling Fan(s), Central Vacuum, Closet Organizers, Double Vanity, Granite Counters, High Ceilings, Kitchen Island, No Smoking Home, Open Floorplan, Pantry, Recessed Lighting, Tankless Hot Water, Vinyl Windows, Walk-In Closet(s)

Inclusions: Shed, 4 Bar Stools at Island, Blinds, & Curtain Rods, Fire Pit, All Wall Mount TV Brackets, RO Water System

The perfect family home in the desirable Timberstone community! This immaculate 2-story walk-out features 4 bedrooms and 4 bathrooms, perfectly designed for modern living. The open-concept main level boasts 10-foot ceilings and a spacious layout, ideal for entertaining. The beautiful kitchen featured under/over and in-cabinet lighting, a large granite island, upgraded stainless steel appliances, including a gas stove, and a convenient walk-through pantry. Step out from the bright dining area onto the covered deck, complete with infrared heaters, offering stunning views of the park and your fully landscaped yard with RV parking. Upstairs, the luxurious master suite awaits, showcasing a spa-like ensuite with a soaker tub, a walk-in shower, double sinks with granite countertops, and a large organized walk-in closet. You'll also find two spacious bedrooms, an upper floor laundry, and a generous bonus room with underfloor heating, perfect for cozy family gatherings. The bright walk-out basement features large windows and direct access to a concrete patio in the backyard, creating another great entertaining space. It includes a sizeable family room, an additional bedroom, and a full bathroom with a custom walk-in shower. Upgraded plumbing and electrical work throughout the home includes a built-in reverse osmosis system, water softener, and energy-efficient boiler for in-floor heating in the basement, garage, and bonus room. The heated double-attached garage (24'x24') is equipped with hot and cold water, floor drains, and high ceilings for extra storage. With allergy-friendly laminate and tile flooring throughout (no carpet), this home is not just beautiful but practical too. Conveniently located within walking distance to schools and close to Timberstone Village and Clearview Market, this is the perfect place for your family to grow. Make 68 Thompson

Crescent your forever home!