



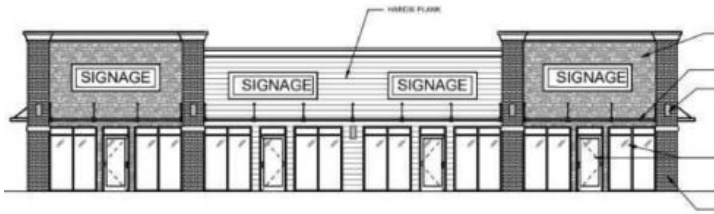
**GRASSROOTS**  
REALTY GROUP

1-833-477-6687  
aloha@grassrootsrealty.ca

10002 94 Avenue  
Grande Prairie, Alberta

MLS # A2287444

**\$26**



East Elevation  
1/8" = 1'-0"

Division: Swanavon

Lot Size: 0.46 Acre

Lot Feat: -

By Town: -

LLD: -

Zoning: CT

Water: -

Sewer: -

Utilities: -

4 BAY BUILD TO SUIT LEASE SPACE . CENTRAL Location! Close to DOWNTOWN, TRIALS and AMENITIES! This could be a great OPPORTUNITY right in the heart of GP. Plans for 4640 sqft building - BUILD TO SUIT!! CAN DO SEVERAL OPTIONS FOR YOUR BUSINESS NEEDS - Permitted uses - Business Support Service, Commercial Business Centre, Boarding House - Discretionary uses - Supermarket, Vehicle Wash, Multi-Attached Dwelling, Gas Bar. Drive by today!