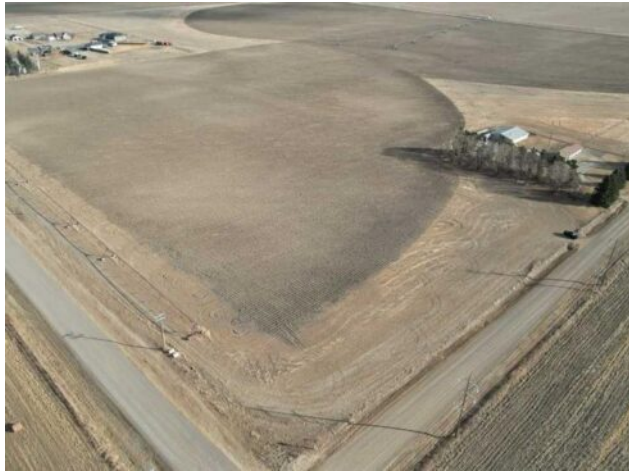




**212072 TWP RD 9-4**  
**Rural Lethbridge County, Alberta**

**MLS # A2288383**



**\$1,960,000**

<b>Division:</b>	NONE		
<b>Cur. Use:</b>	-		
<b>Style:</b>	Bi-Level		
<b>Size:</b>	1,290 sq.ft.	<b>Age:</b>	-
<b>Beds:</b>	4	<b>Baths:</b>	2
<b>Garage:</b>	Quad or More Attached		
<b>Lot Size:</b>	39.50 Acres		
<b>Lot Feat:</b>	-		

<b>Heating:</b>	Boiler, Natural Gas	<b>Water:</b>	-
<b>Floors:</b>	Carpet, Laminate	<b>Sewer:</b>	-
<b>Roof:</b>	Asphalt Shingle	<b>Near Town:</b>	Lethbridge
<b>Basement:</b>	Full	<b>LLD:</b>	21-9-27-W4
<b>Exterior:</b>	Wood Frame	<b>Zoning:</b>	RA
<b>Foundation:</b>	Poured Concrete	<b>Utilities:</b>	-
<b>Features:</b>	-		

**Major Use:** Potatoes

Prime location just off of 43st N/Hwy 843 kitty corner from the edge of the city limits. The home is on city water and is a bi-level with 4 bedrooms and 2 bathrooms. Kitchen has been nicely updated and it features a heated sunroom facing north. 3 bedrooms upstairs and 1 down with 2 large family rooms and ample storage throughout. You also get a 4 car garage and a 2860 sqft heated shop!