

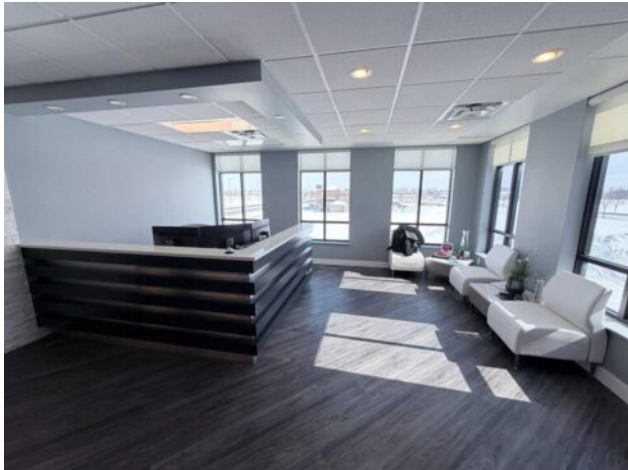


**GRASSROOTS**  
REALTY GROUP

1-833-477-6687  
aloha@grassrootsrealty.ca

200, 10508 67 Avenue  
Grande Prairie, Alberta

MLS # A2294378



**\$26 per sq.ft.**

Division: Stone Ridge

Type: Office

Bus. Type: -

Sale/Lease: For Lease

Bldg. Name: -

Bus. Name: -

Size: 6,066 sq.ft.

Zoning: -

Heating: -

Floors: -

Roof: -

Exterior: -

Water: -

Sewer: -

Inclusions: n/a

Addl. Cost: -

Based on Year: -

Utilities: -

Parking: -

Lot Size: -

Lot Feat: -

Ideally located across from the Eastlink Centre just off 68 Avenue, this 6,066 SF second-floor office space offers exceptional exposure, access, and a highly functional layout within one of Grande Prairie's premier business areas. The space is in excellent condition and features twelve modern private offices, a large boardroom, staff/lunchroom, open bullpen area, and two spacious washrooms, with select office furniture included. Easily accessed via elevator from the main lobby, the layout provides a welcoming and efficient environment suited to a wide range of professional users. The location also benefits from strong curb appeal and ample on-site parking. A rare opportunity to secure a turn-key office in a high-demand location—call your Commercial Realtor; today for more information or to arrange a private tour.