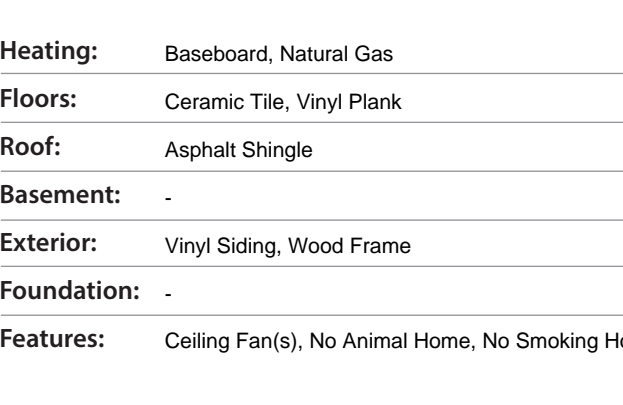




**301, 9024 Alberta Avenue
Lac La Biche, Alberta**

MLS # A2297936

\$242,500



Division:	Lac La Biche		
Type:	Residential/Low Rise (2-4 stories)		
Style:	Apartment-Single Level Unit		
Size:	1,223 sq.ft.	Age:	1993 (33 yrs old)
Beds:	2	Baths:	2
Garage:	Carport		
Lot Size:	-		
Lot Feat:	-		

Heating:	Baseboard, Natural Gas	Water:	-
Floors:	Ceramic Tile, Vinyl Plank	Sewer:	-
Roof:	Asphalt Shingle	Condo Fee:	\$ 619
Basement:	-	LLD:	-
Exterior:	Vinyl Siding, Wood Frame	Zoning:	RS RESIDENTIAL
Foundation:	-	Utilities:	-
Features:	Ceiling Fan(s), No Animal Home, No Smoking Home, Vaulted Ceiling(s), Vinyl Windows		

Inclusions: n/a

Are you looking for an amazing condo with a view? This top-floor corner suite offers windows on two sides, showcasing panoramic views of Lac La Biche Lake and the surrounding trees. Located in Alexandra Renaissance, this well-maintained complex features a secure, gated and fenced property, covered parking, outdoor storage units, a gazebo, and walking trails. Enjoy true low-maintenance living—no snow removal or lawn care required—just lock up and go with peace of mind. Relax on the large covered balcony while taking in the sights and sounds of nature in this quiet setting on the outskirts of town. Inside, the unit offers spacious rooms and has seen several tasteful upgrades, including new luxury vinyl plank flooring, bright ceramic tile, stainless steel appliances, custom blinds, and fully updated bathrooms with new showers, sinks, and toilets. This clean, well-kept building and beautifully updated unit make for comfortable and easy living. Call today to book your showing!