

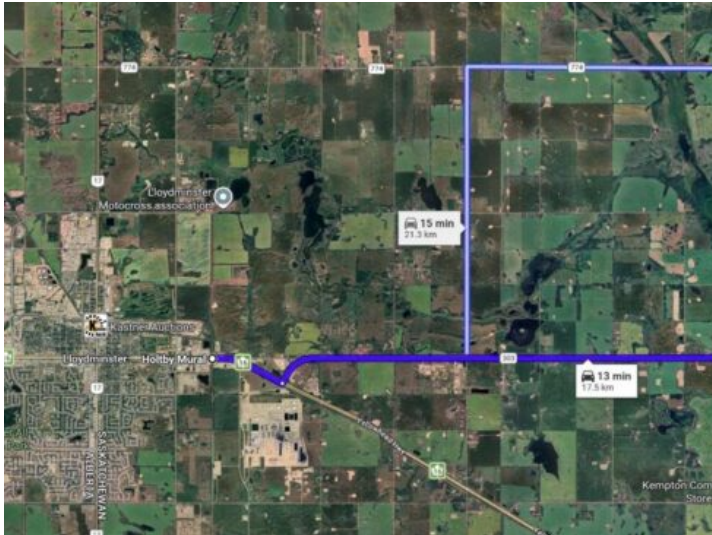


GRASSROOTS
REALTY GROUP

1-833-477-6687
aloha@grassrootsrealty.ca

PT NE 18-50-26 W3 EXT 0 PT NE 18-50-26 W3 EXT 0
Rural, Saskatchewan

MLS # A2300091



\$139,900

Division: NONE

Lot Size: 5.00 Acres

Lot Feat: -

By Town: -

LLD: 18-50-26-W3

Zoning: Farm

Water: -

Sewer: -

Utilities: -

Located just 13 minutes from Lloydminster, this property offers a rare opportunity to enjoy quiet country living in a truly beautiful setting. Nestled in Saskatchewan and just steps from the scenic gully, this location is known for its natural beauty, privacy, and peaceful surroundings. Only 2 minutes from the Big Gully Regional Park and boat launch, you'll have easy access to outdoor recreation including boating, walking trails, and time by the water. The area is quiet, scenic, and surrounded by nature, making it ideal for those looking to get away from the busy pace of town while still staying close to all amenities. This is a hard-to-find location that offers the perfect balance of convenience and peaceful living.