

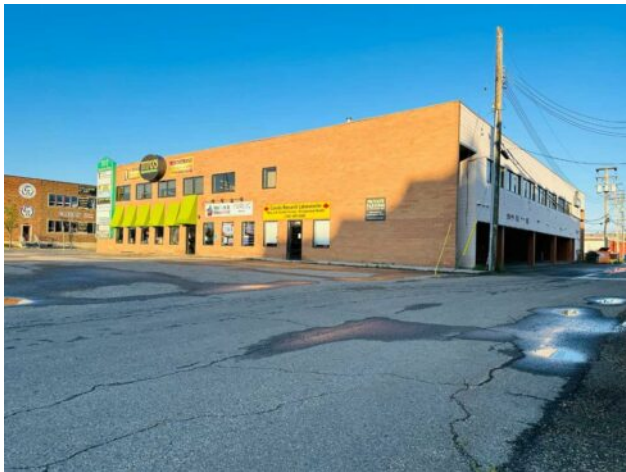


GRASSROOTS
REALTY GROUP

1-833-477-6687
aloha@grassrootsrealty.ca

200 B, 10006 101 Avenue
Grande Prairie, Alberta

MLS # A2103766



\$11 per sq.ft.

Division: Central Business District

Type: Mixed Use

Bus. Type: -

Sale/Lease: For Lease

Bldg. Name: -

Bus. Name: -

Size: 2,197 sq.ft.

Zoning: CC

Heating: -

Addl. Cost: -

Floors: -

Based on Year: -

Roof: -

Utilities: -

Exterior: -

Parking: -

Water: -

Lot Size: -

Sewer: -

Lot Feat: -

Inclusions: N/A

8 private offices with large inviting reception and a fireplace downtown with extra Parking and a elevator. Rent includes ALL UTILITIES. Building has AC and Fibre Internet is available. This large bright space also features a kitchenette and storage rooms. \$2,013.92/month for base rent plus \$1,525.08 additional rent for a total monthly all in payment of \$3,539 plus GST.