



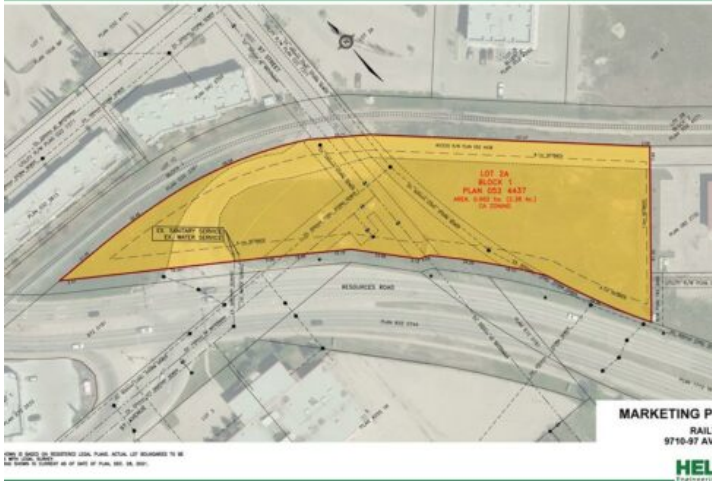
**GRASSROOTS**  
REALTY GROUP

1-833-477-6687  
aloha@grassrootsrealty.ca

**9710 97 Avenue  
Grande Prairie, Alberta**

**MLS # A2112337**

**\$399,000**



**Division:** Central Business District

**Lot Size:** 2.38 Acres

**Lot Feat:** -

**By Town:** -

**LLD:** -

**Zoning:** CA

**Water:** -

**Sewer:** -

**Utilities:** -

2.38 acres zoned Commercial use, conveniently located in the heart of the City, in the very popular Junction Point Village. Close to the Royal Bank and just off Resources Road, these lots are the perfect location for Commercial / Retail condos or a great area to start up or re-locate your business!