



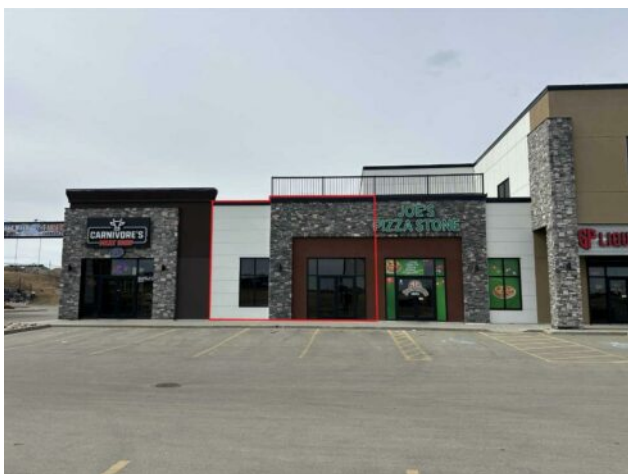
GRASSROOTS
REALTY GROUP

1-833-477-6687

aloha@grassrootsrealty.ca

7, 15502B 101 Street
Clairmont, Alberta

MLS # A2122191



\$32 per sq.ft.

Division: NONE

Type: Mixed Use

Bus. Type: -

Sale/Lease: For Lease

Bldg. Name: -

Bus. Name: -

Size: 795 sq.ft.

Zoning: cc

Heating: -

Addl. Cost: -

Floors: -

Based on Year: -

Roof: -

Utilities: -

Exterior: -

Parking: -

Water: -

Lot Size: -

Sewer: -

Lot Feat: -

Inclusions: n/a

This retail location is situated off Highway 43 just north of Grande Prairie in a highly visible location. Position your business in the professional plaza it deserves. Call your Commercial Realtor for more information or to book a showing today. (Base Rent 795 SF @ \$32 PSF = \$2,120.00/month. Additional Rent: 795 SF @ \$10.00 PSF = \$662.50/month; Total Monthly Payment: \$2,782.50 plus GST.