

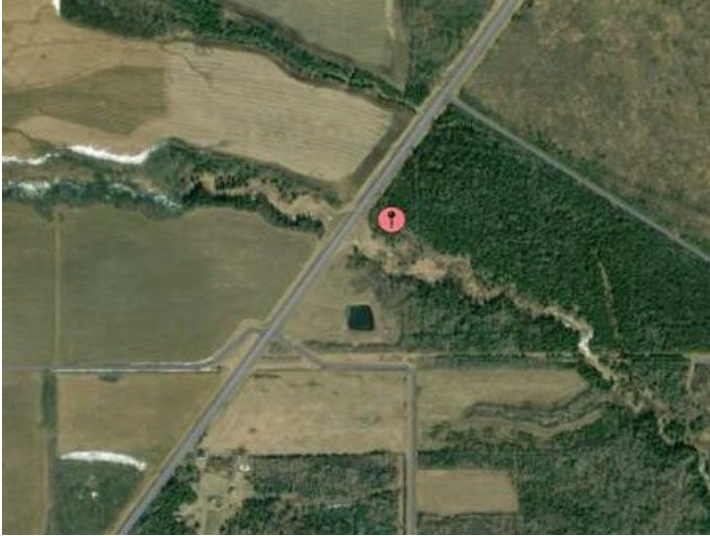


GRASSROOTS
REALTY GROUP

1-833-477-6687
aloha@grassrootsrealty.ca

HWY 743 and 862A
Rural Northern Lights, County of, Alberta

MLS # A2122896



\$27,500

Division: NONE

Lot Size: 2.67 Acres

Lot Feat: -

By Town: Peace River

LLD: 17-86-21-W5

Zoning: AG

Water: -

Sewer: None

Utilities: -

LOCATED APPROX 8 MILES NORTH ON HWY 743 FROM HWY 986 YOU WILL FIND THIS PATCH OF OLD GROWTH SPRUCE AND POPLAR JUST TO YOUR LIKING. THE PIE SHAPED LAND OVERLOOKS A CREEK BED THAT IS ZONED ENVIRONMENTAL RESERVE SO YOUR VIEW WILL NEVER BE IMPEDED AND WITH ABOUT 100 M ALONG THE BANK YOU WILL HAVE MULTIPLE LOCATIONS FOR YOUR HOME. GAS POWER AND TELEPHONE ARE RIGHT BY THE ROADWAY AND THE HWY ITSELF IS BEEN UPGRADED TO NEW STANDARDS