

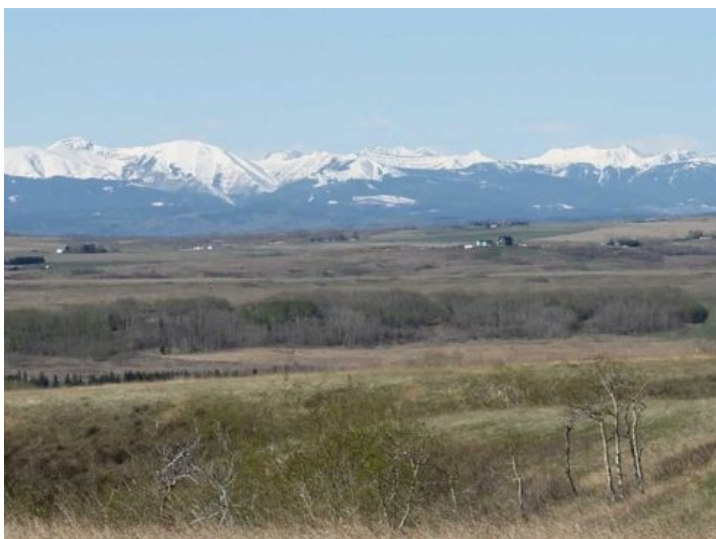


GRASSROOTS
REALTY GROUP

1-833-477-6687
aloha@grassrootsrealty.ca

255073 Glenbow Road
Rural Rocky View County, Alberta

MLS # A2126705



\$1,500,000

Division: NONE

Lot Size: 4.27 Acres

Lot Feat: -

By Town: Cochrane

LLD: 32-25-3-W5

Zoning: R-RUR

Water: -

Sewer: -

Utilities: -

Outstanding rural home site with majestic mountain views overlooking the bow river valley, prime location surrounded by glenbow ranch and glenbow ranch provincial park, only one close neighbor on the acreage adjacent to the south, site slopes slightly to the southwest and is bordered on two sides with a windbreak of mature trees, easy commuting distance to cochrane (8km) and calgary (16km) via 1a highway…. both visible from property, site is serviced with power, gas, telephone and a new well…. 12 gpm at 125 ft, property has potential to be subdivided into two acre lots.