



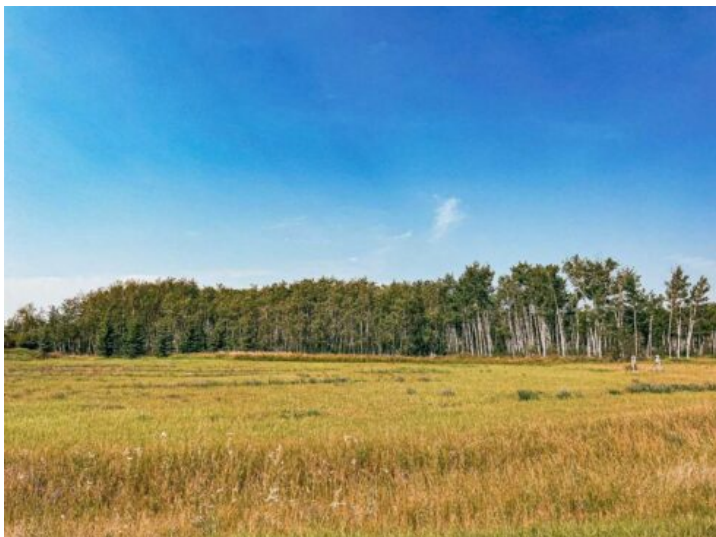
**GRASSROOTS**  
REALTY GROUP

1-833-477-6687

aloha@grassrootsrealty.ca

**32, 713010 Range Road 70**  
**Rural Grande Prairie No. 1, County of, Alberta**

**MLS # A2128224**



**\$214,900**

**Division:** NONE

**Lot Size:** 3.19 Acres

**Lot Feat:** -

**By Town:** Grande Prairie

**LLD:** 24-71-7-W6

**Zoning:** CR-2

**Water:** Public

**Sewer:** -

**Utilities:** Electricity, Natural Gas, Phone

One of Grande Prairie's Newest Sub-Divisions - 'WEST 70 ESTATES' This subdivision is situated just west of the city, this community offers LARGE lots ranging from 3 to 4.62 acres with views of the city. Features include city water, fiber optics, below ground utilities, county taxes and just minutes from Grande Prairie's West Side Shopping!! West 70 Estates offers you the SPACE and PRIVACY to enjoy your NEW Home without the commute. LOTS ARE READY TO BE BUILT ON!! CHECK THESE OUT; YOU WON'T BE DISAPPOINTED!!