

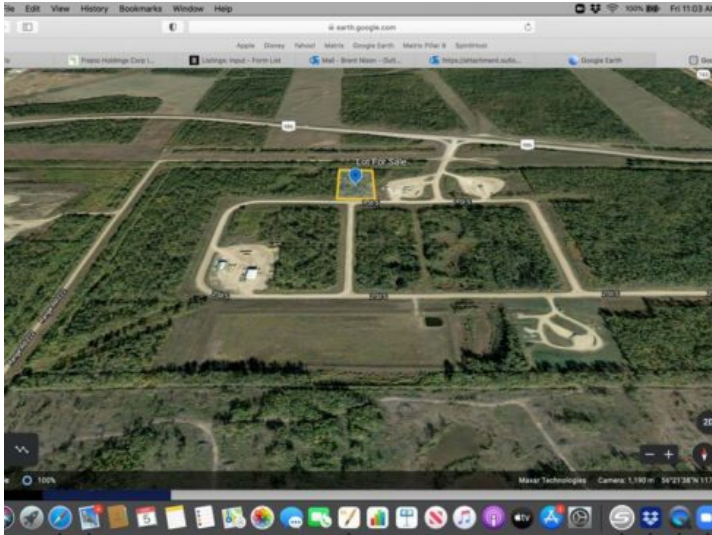


GRASSROOTS
REALTY GROUP

1-833-477-6687
aloha@grassrootsrealty.ca

1 Street
Rural Northern Lights, County of, Alberta

MLS # A2133814



\$69,900

Division: NONE

Lot Size: 4.97 Acres

Lot Feat: -

By Town: Peace River

LLD: 11-85-22-W5

Zoning: Industrial

Water: -

Sewer: -

Utilities: -

Talk about a deal This 4.97 acre industrial lot located in the Weberville Industrial Park This Land has never been developed and is ready for it's new owner. This lot is close to the Mercer Pulp Mill as well as Hwy 986 and Hwy 743 just 10 miles north of Peace River. In the Weberville Industrial Subdivision The time is now Call to View