

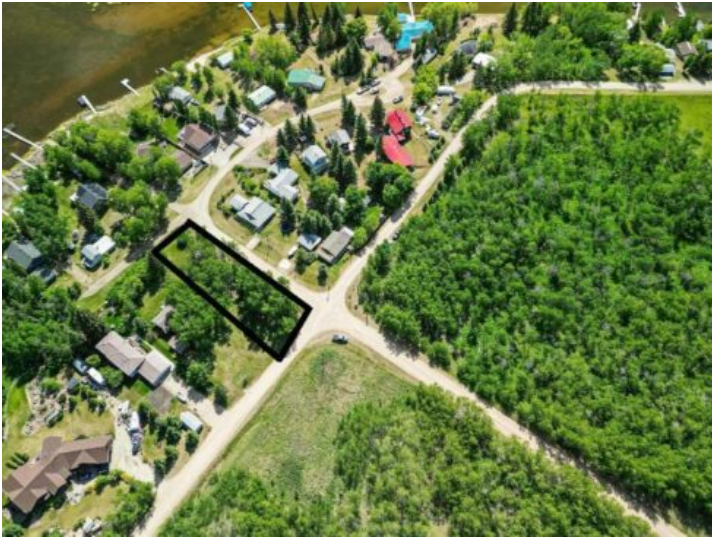


**GRASSROOTS**  
REALTY GROUP

1-833-477-6687  
aloha@grassrootsrealty.ca

**102, 36078 Range Road 245A  
Rural Red Deer County, Alberta**

**MLS # A2141570**



**\$149,900**

**Division:** NONE

**Lot Size:** 0.33 Acre

**Lot Feat:** -

**By Town:** Penhold

**LLD:** 5-36-24-W4

**Zoning:** R6

**Water:** -

**Sewer:** -

**Utilities:** -

Within 30 minutes of Red Deer, 1.5 hours from Calgary and a stone's throw to lake access, enjoy the summer at Pine Lake! This long narrow lake is a beautiful destination for fishing, boating, kayaking, swimming, golf and hiking. This large corner lot is treed for privacy and is the perfect location to take in the great outdoors! Whether summer or year round use, build your cottage or dream home here! Neighbouring cottage lot (A2141555) also available!