

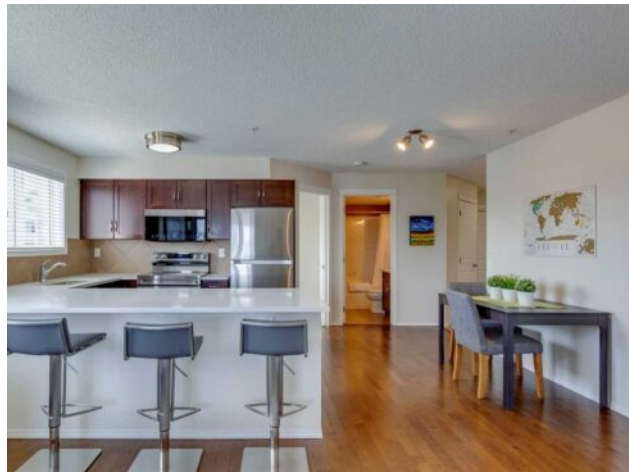


**GRASSROOTS**  
REALTY GROUP

1-833-477-6687  
aloha@grassrootsrealty.ca

**5314, 69 Country Village Manor NE**  
**Calgary, Alberta**

**MLS # A2152623**



**\$334,900**

<b>Division:</b>	Country Hills Village		
<b>Type:</b>	Residential/Low Rise (2-4 stories)		
<b>Style:</b>	Apartment		
<b>Size:</b>	880 sq.ft.	<b>Age:</b>	2008 (16 yrs old)
<b>Beds:</b>	2	<b>Baths:</b>	2
<b>Garage:</b>	Parkade, Titled, Underground		
<b>Lot Size:</b>	-		
<b>Lot Feat:</b>	-		

<b>Heating:</b>	Radiant	<b>Water:</b>	-
<b>Floors:</b>	Carpet, Ceramic Tile, Hardwood	<b>Sewer:</b>	-
<b>Roof:</b>	-	<b>Condo Fee:</b>	\$ 465
<b>Basement:</b>	-	<b>LLD:</b>	-
<b>Exterior:</b>	Brick, Vinyl Siding, Wood Frame	<b>Zoning:</b>	DC (pre 1P2007)
<b>Foundation:</b>	-	<b>Utilities:</b>	-
<b>Features:</b>	No Smoking Home, Quartz Counters		

**Inclusions:** N/A

Here is the opportunity you have been waiting for. A meticulously maintained two-bedroom two-bathroom home in the well-run Lighthouse Landing in Country Hills Village. This bright corner unit provides a true turn-key investment with recent updates including newer carpets, and brand-new stainless-steel appliances. When you first enter this home, you are greeted by a large functional entranceway leading through to the spacious unit spanning 880 sqft. The layout provides the perfect opportunity for a home office or roommates as the bedrooms are separated for maximum privacy. The delightful kitchen provides quartz countertops and a large island that affords ample counter space. Space for a dining table and a breakfast bar ensures that you can comfortably host guests in your new home. The comfortable living room offers a gorgeous fireplace as the focal point and access to the balcony. The corner unit ensures privacy on the sun-soaked east and south-facing balcony. The spacious primary bedroom is a comfortable retreat with a large walk-in closet and a 4-piece ensuite bathroom, also featuring quartz countertops. This property includes a titled parking stall in the heated parkade, an assigned storage locker and in-suite laundry. Lighthouse Landing offers proximity to Vivo, walking paths along the pond and access to main routes and the shops and restaurants of Country Hills.