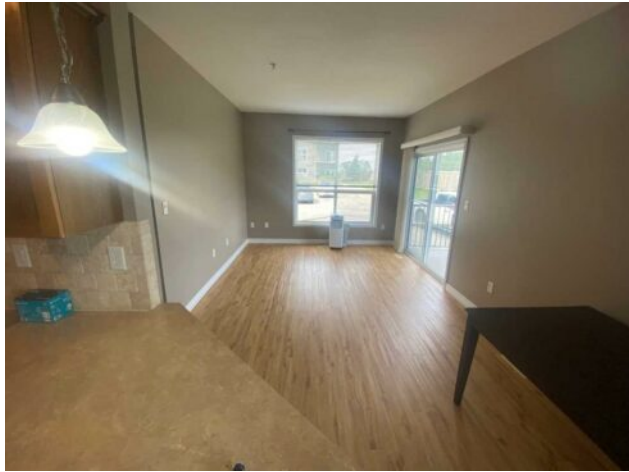




**103, 9229 Lakeland Drive  
Grande Prairie, Alberta**

**MLS # A2182342**



**\$174,900**

<b>Division:</b>	Lakeland		
<b>Type:</b>	Residential/Low Rise (2-4 stories)		
<b>Style:</b>	Apartment		
<b>Size:</b>	865 sq.ft.	<b>Age:</b>	2006 (18 yrs old)
<b>Beds:</b>	2	<b>Baths:</b>	2
<b>Garage:</b>	Stall		
<b>Lot Size:</b>	-		
<b>Lot Feat:</b>	-		

<b>Heating:</b>	Boiler, Combination, Fan Coil	<b>Water:</b>	-
<b>Floors:</b>	Carpet, Laminate, Linoleum	<b>Sewer:</b>	-
<b>Roof:</b>	-	<b>Condo Fee:</b>	\$ 574
<b>Basement:</b>	-	<b>LLD:</b>	-
<b>Exterior:</b>	Mixed, Vinyl Siding, Wood Frame	<b>Zoning:</b>	Residential
<b>Foundation:</b>	-	<b>Utilities:</b>	-
<b>Features:</b>	Laminate Counters, Open Floorplan		

**Inclusions:** none

Welcome to this charming and well cared for, 2 bedroom, 2 FULL bath Condo in desirable Lakeland , an outstanding condo that offers the perfect blend of comfort and convenience. This ground level corner unit is private and easy to access, no stairs or elevators to deal with. The condo is wide open with the Kitchen, dinning, and living room together. In suite laundry and storage add to the convenience of this floor plan. The two bedrooms are on opposite sides of the living area, are both a good size and offer sanctuary within this superb condo. call your Realtor to book a private view.