



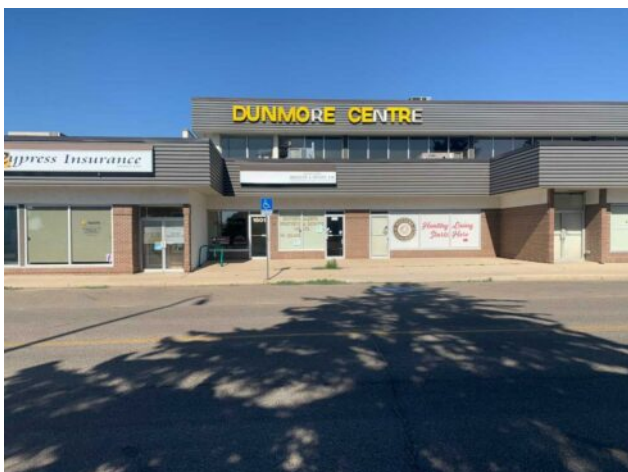
GRASSROOTS
REALTY GROUP

1-833-477-6687

aloha@grassrootsrealty.ca

205, 1601 Dunmore Road SE
Medicine Hat, Alberta

MLS # A2182435



\$7 per sq.ft.

Division: Southview-Park Meadows

Type: Office

Bus. Type: -

Sale/Lease: For Lease

Bldg. Name: -

Bus. Name: -

Size: 1,483 sq.ft.

Zoning: -

Heating: -

Addl. Cost: -

Floors: -

Based on Year: -

Roof: -

Utilities: -

Exterior: -

Parking: -

Water: -

Lot Size: -

Sewer: -

Lot Feat: -

Inclusions: N/A

Centrally located second floor office space. This space has 3 good sized offices, all with large windows, Board room and open reception/waiting area (or could be used as bullpen office space). Beautiful View of park Behind and lots of natural light. Shared washrooms for the Tenants on the second floor. Operating costs \$6.78/sq ft (includes utilities)