



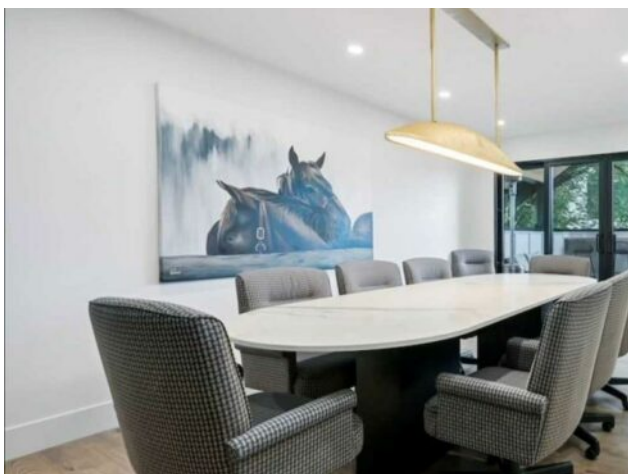
GRASSROOTS
REALTY GROUP

1-833-477-6687

aloha@grassrootsrealty.ca

**338 24 Avenue SW
Calgary, Alberta**

MLS # A2183731



\$1,100 per month

Division: Mission

Type: Office

Bus. Type: -

Sale/Lease: For Lease

Bldg. Name: -

Bus. Name: -

Size: 80 sq.ft.

Zoning: C-COR1

Heating: -

Floors: -

Roof: -

Exterior: -

Water: -

Sewer: -

Inclusions: None

Addl. Cost: -

Based on Year: -

Utilities: -

Parking: -

Lot Size: 0.10 Acre

Lot Feat: -

Individual offices for rent \$1100 per month plus \$400 for wireless internet access, utilities and shared access to our common areas. Located downtown kitty corner to Earls Tin Palace.