



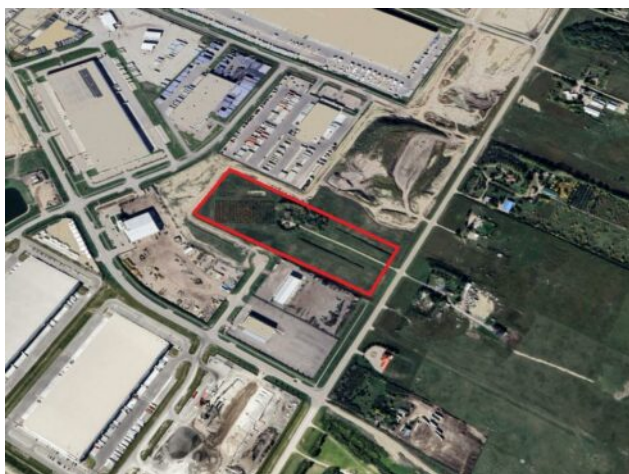
GRASSROOTS
REALTY GROUP

1-833-477-6687

aloha@grassrootsrealty.ca

261057 Range Road 290
Rural Rocky View County, Alberta

MLS # A2185229



\$6,000,000

Division: NONE

Type: Industrial

Bus. Type: -

Sale/Lease: For Sale

Bldg. Name: -

Bus. Name: -

Size: 0 sq.ft.

Zoning: I-HVY

Heating: -

Addl. Cost: -

Floors: -

Based on Year: -

Roof: -

Utilities: -

Exterior: -

Parking: -

Water: -

Lot Size: 16.31 Acres

Sewer: -

Lot Feat: -

Inclusions: N/A

Opportunity knocks! 16.31 acres +/- zoned Industrial Heavy District in the Balzac East ASP. The opportunities are endless with this property. Property has farm utilities (gas, power, septic tank and a drilled well) on the property. The Sellers will be removing the house, garage and shed prior to possession. Please call for information package!