



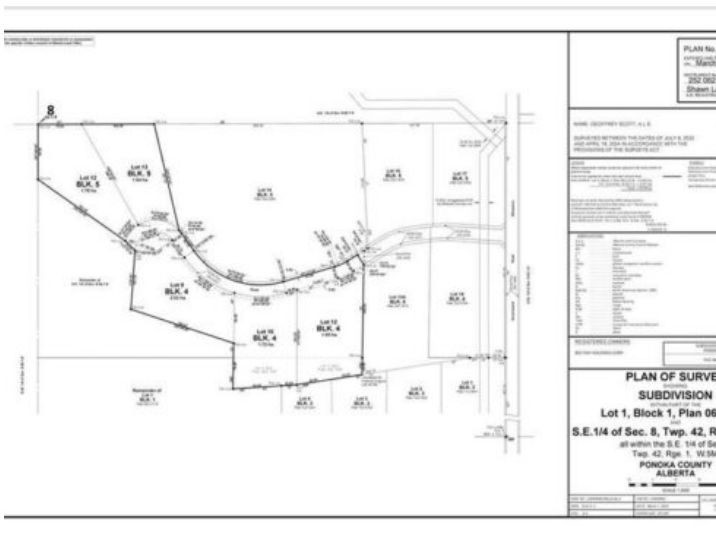
**GRASSROOTS**  
REALTY GROUP

1-833-477-6687

aloha@grassrootsrealty.ca

**Lot 9 Range Road 14  
Rimbey, Alberta**

**MLS # A2187816**



**\$145,900**

**Division:** NONE

**Lot Size:** 4.99 Acres

**Lot Feat:** -

**By Town:** Rimbey

**LLD:** 8-42-1-W5

**Zoning:** CR

**Water:** None

**Sewer:** -

**Utilities:** -

Located just 12 minutes west of Rimbey and minutes from the shores of Gull Lake, this approved subdivision offers the perfect blend of rural tranquility and modern convenience. With a selection of stunning acreage lots to choose from, you can find the ideal setting to build your dream home. Each lot comes fully serviced, ensuring a smooth transition to your new lifestyle. The community is thoughtfully designed to maintain a high-quality living environment, with only permanent dwellings allowed.\* Enjoy easy access to essential amenities, including a hospital, schools, and Tim Hortons in Rimbey, while also being just a short drive from the Gull Lake Marina and Golf Course. Once you've chosen your lot, taxes will be finalized and adjusted upon the completion of title registration. Don't miss this rare opportunity to create your perfect country retreat while staying close to everything you need! Please note that mobile homes are not permitted in this subdivision.