

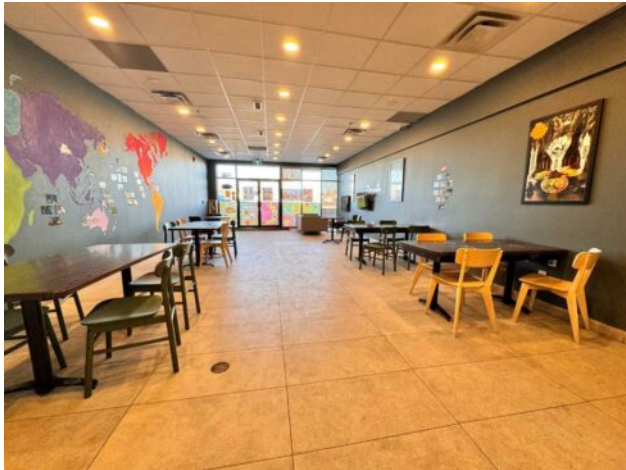


GRASSROOTS
REALTY GROUP

1-833-477-6687
aloha@grassrootsrealty.ca

240 Midpark Way SE
Calgary, Alberta

MLS # A2191902



\$199,900

Division: Midnapore

Type: Business

Bus. Type: Fast Food, Food & Beverage

Sale/Lease: For Lease

Bldg. Name: -

Bus. Name: -

Size: 1,541 sq.ft.

Zoning: -

Heating: -

Addl. Cost: -

Floors: -

Based on Year: -

Roof: -

Utilities: -

Exterior: -

Parking: -

Water: -

Lot Size: -

Sewer: -

Lot Feat: -

Inclusions: N/A

An excellent opportunity to own a Taiwanese global franchise teahouse chain, recognized as the largest teahouse franchise in the world. This beautifully designed 1,541 sq. ft. store is located in a prime area near Macleod Trail SE, with ample customer parking and two reserved spots. The monthly rent is only \$5,830, which includes operating costs and utility fees. This turnkey business comes fully equipped, and the franchise provides comprehensive training and full support to ensure your success. Don't miss the chance to own this established and thriving teahouse in a high-traffic location!