

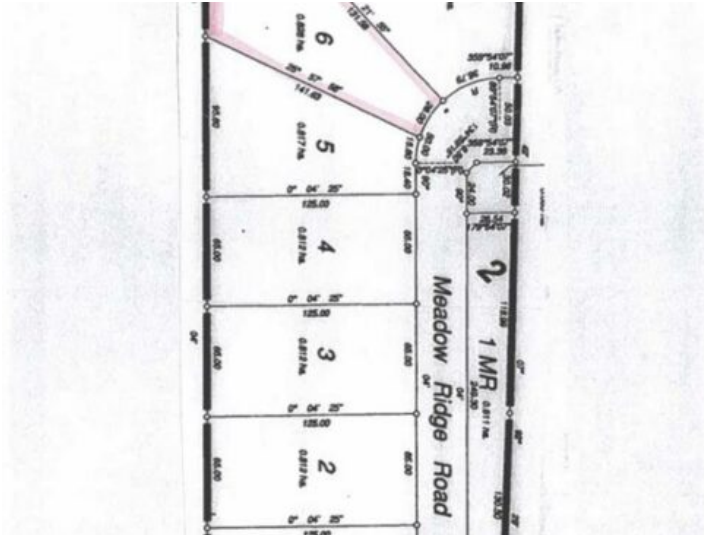


**GRASSROOTS**  
REALTY GROUP

1-833-477-6687  
aloha@grassrootsrealty.ca

pt NE-24-45-7-W4  
Rural Wainwright No. 61, M.D. of, Alberta

MLS # A2193741



**\$59,900**

Division: NONE

Lot Size: 2.05 Acres

Lot Feat: -

By Town: Wainwright

LLD: 24-45-7-W4

Zoning: CR

Water: None

Sewer: -

Utilities: -

Welcome to Meadowlark Estates, a brand-new acreage community offering 7 spacious lots, each measuring 2 acres. Located less than 10 minutes north of Wainwright, these properties provide the perfect blend of peaceful country living with the convenience of nearby town amenities. Enjoy paved roads right to your driveway and soak in the beautiful unobstructed countryside views from your future dream home. Whether you're looking to build a family haven or a private retreat, these lots offer endless possibilities—all at an affordable price. Don't miss your chance to secure a piece of this serene community. Build your dream home in Meadowlark Estates today!