

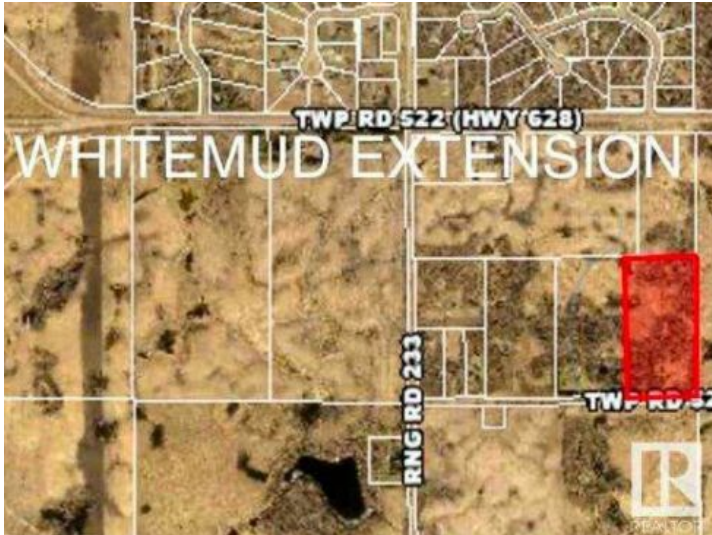


GRASSROOTS
REALTY GROUP

1-833-477-6687
aloha@grassrootsrealty.ca

23246 Township 521A Township
Rural Strathcona County, Alberta

MLS # A2195416



\$2,500,000

Division: Colchester Lane

Lot Size: 20.51 Acres

Lot Feat: -

By Town: Sherwood Park

LLD: 10-52-23-W4

Zoning: RA

Water: Cistern

Sewer: -

Utilities: Cable, Electricity

20.52 Acres Zoned RA (Rural Residential/Agriculture). This rolling and treed land has so much to offer and is located minutes to Sherwood Park in the sought after area of COLCHESTER. Many excellent building sites. Property has Power, Gas & Cable already in.