



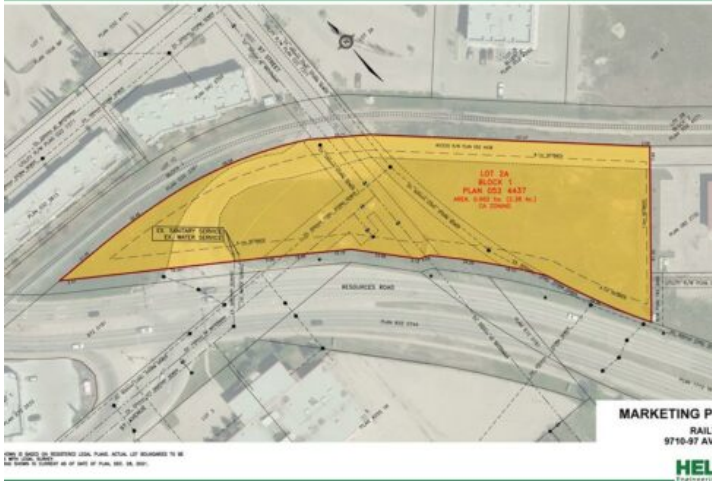
GRASSROOTS
REALTY GROUP

1-833-477-6687
aloha@grassrootsrealty.ca

**9710 97 Avenue
Grande Prairie, Alberta**

MLS # A2208477

\$129,000



Division: Central Business District

Lot Size: 2.38 Acres

Lot Feat: -

By Town: -

LLD: -

Zoning: CA

Water: -

Sewer: -

Utilities: -

2.38 acres zoned Commercial use, conveniently located in the heart of the City, in the very popular Junction Point Village. Close to the Royal Bank and just off Resources Road, these lots are the perfect location for Commercial / Retail condos or a great area to start up or re-locate your business! Can build to suit!!!